

SMAGP Antibody (Center)
Affinity Purified Rabbit Polyclonal Antibody (Pab)
Catalog # AP5271c**Specification**

SMAGP Antibody (Center) - Product Information

Application	FC, IHC-P, WB,E
Primary Accession	Q0VAQ4
Reactivity	Human
Host	Rabbit
Clonality	Polyclonal
Isotype	Rabbit IgG
Calculated MW	10679
Antigen Region	46-75

SMAGP Antibody (Center) - Additional Information**Gene ID** 57228**Other Names**

Small cell adhesion glycoprotein, Small transmembrane and glycosylated protein, SMAGP

Target/Specificity

This SMAGP antibody is generated from rabbits immunized with a KLH conjugated synthetic peptide between 46-75 amino acids from the Central region of human SMAGP.

Dilution

FC~~1:10~50

IHC-P~~1:50~100

WB~~1:1000

E~~Use at an assay dependent concentration.

Format

Purified polyclonal antibody supplied in PBS with 0.09% (W/V) sodium azide. This antibody is purified through a protein A column, followed by peptide affinity purification.

Storage

Maintain refrigerated at 2-8°C for up to 2 weeks. For long term storage store at -20°C in small aliquots to prevent freeze-thaw cycles.

Precautions

SMAGP Antibody (Center) is for research use only and not for use in diagnostic or therapeutic procedures.

SMAGP Antibody (Center) - Protein Information**Name** SMAGP

Function May play a role in epithelial cell-cell contacts. May play a role in tumor invasiveness and metastasis formation.

Cellular Location

Cell membrane; Single-pass type III membrane protein. Cytoplasmic vesicle membrane; Single-pass type III membrane protein. Note=Predominantly on lateral parts of the membrane, at cell-cell epithelial junctions (PubMed:15021913) Detected on cytoplasmic membranes in undifferentiated tumors (PubMed:15986429).

Tissue Location

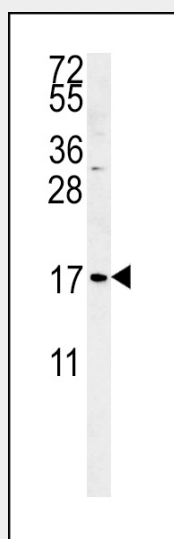
Detected in breast, endometrium, colon and biliary tract. Detected in polarized epithelial structures characterized by cell-cell adhesion (at protein level).

SMAGP Antibody (Center) - Protocols

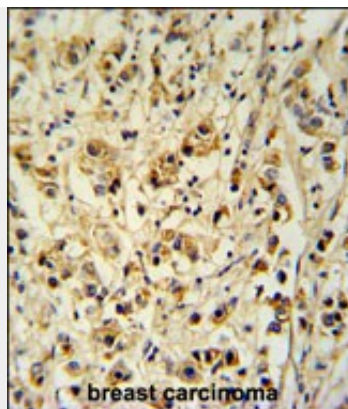
Provided below are standard protocols that you may find useful for product applications.

- [Western Blot](#)
- [Blocking Peptides](#)
- [Dot Blot](#)
- [Immunohistochemistry](#)
- [Immunofluorescence](#)
- [Immunoprecipitation](#)
- [Flow Cytometry](#)
- [Cell Culture](#)

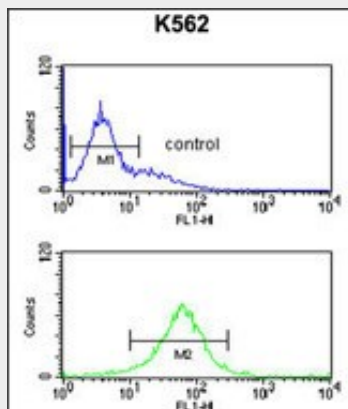
SMAGP Antibody (Center) - Images



SMAGP Antibody (Center) Cat. #AP5271c western blot analysis in K562 cell line lysates (35ug/lane). This demonstrates the SMAGP antibody detected the SMAGP protein (arrow).



SMAGP Antibody (Center) (Cat. #AP5271c) immunohistochemistry analysis in formalin fixed and paraffin embedded human breast carcinoma followed by peroxidase conjugation of the secondary antibody and DAB staining. This data demonstrates the use of the SMAGP Antibody (Center) for immunohistochemistry. Clinical relevance has not been evaluated.



SMAGP Antibody (Center) (Cat. #AP5271c) flow cytometric analysis of K562 cells (bottom histogram) compared to a negative control cell (top histogram). FITC-conjugated goat-anti-rabbit secondary antibodies were used for the analysis.

SMAGP Antibody (Center) - Background

SMAGP may play a role in epithelial cell-cell contacts. SMAGP may play a role in tumor invasiveness and metastasis formation.

SMAGP Antibody (Center) - References

Tarbe, N.G., et al. Int. J. Cancer 117(6):913-922(2005)
Tarbe, N.G., et al. Oncogene 23(19):3395-3403(2004)